

**Corrigendum**

**of 23 November 2023**

**to ACER Report on cross-zonal capacities and the 70% margin available for cross-zonal electricity trade**

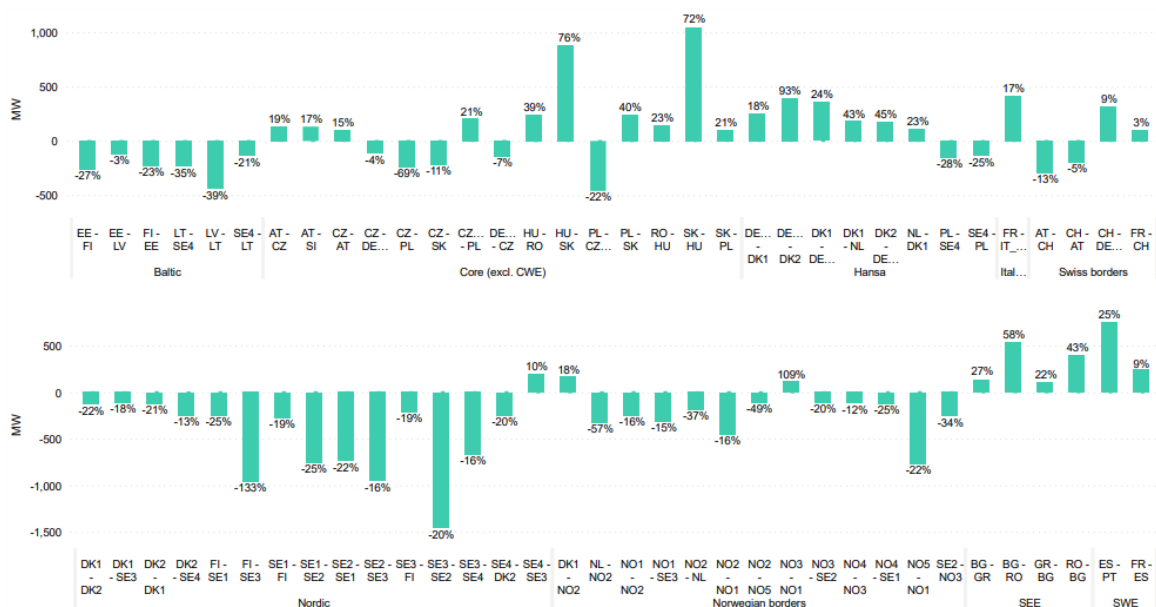
In Section 1.2, paragraph 25:

*for:* ‘Figure 6 shows the major changes in NTC values on European borders between 2021 and 2022. Overall, NTC values remained stable, with some local variations. Notably, they decreased in the Baltic, Nordic regions, and at Norwegian borders (-10%, -9.5% and -8%, respectively), and increases in Italy North and SEE (5.8% and 18%, respectively).’

*read:* ‘Figure 6 shows the major changes in NTC values on European borders between 2021 and 2022. Overall, NTC values remained stable, with some local variations. Notably, they decreased in the Baltic, Hansa and SWE borders (-11.9%, -4% and -1.8%, respectively), and increases at Norwegian borders, Swiss borders and SEE (5.4%, 5.9 and 13.9%, respectively)’

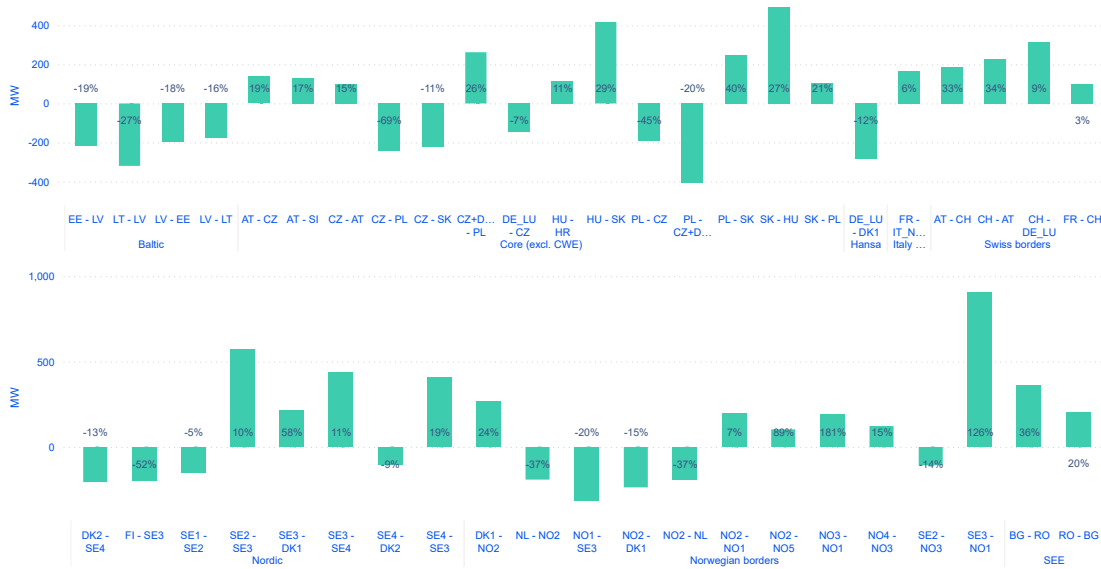
In Section 1.2, Figure 6:

*for:*





read:



In Section 1.2, paragraph 26:

for: ‘Drops in NTC values in the Nordic region may illustrate remaining network constraints (e.g., east-west flows in Sweden), in the context of changing generation patterns (end of Russian imports to Finland since mid-May 2022, decrease in hydroelectric production, increase in wind production).’

Paragraph removed.

In Section 2.2.2, Table 3:

for:

PT	SWE (ES-PT)	Export	The derogation sets that the 70% target must be met at least 75% of the hours.	70% target met 92% of the hours of the year, and 93% of the hours when there is a limiting CNEC declared in the Member State.	N.A.
		Import		70% target met 79% of the hours of the year, and 81% of the hours when there is a limiting CNEC declared in the Member State.	N.A.

*read:*

PT	SWE (ES-PT)	Export	The derogation sets that the 70% target must be met at least 75% of the hours.	70% target met 79% of the hours of the year, and 81% of the hours when there is a limiting CNEC declared in the Member State.	N.A.
		Import		70% target met 92% of the hours of the year, and 93% of the hours when there is a limiting CNEC declared in the Member State.	N.A.

-----